



**ALASKA DIVISION OF HOMELAND
SECURITY & EMERGENCY
MANAGEMENT**



**Daily Situation Report
26-104 • April 14, 2026**

Toll-Free 1.800.478.2337

Anchorage Area 907.428.7000

SEOC 907.428.7100

<p><u>SEOC Preparedness Level</u> Level 1-Routine Operations</p>	<p>http://ready.alaska.gov</p>	<p><u>Alaska Military Installation Force</u> <u>Protection Level:</u> FPCON Bravo</p>
<p><u>NTAS Bulletin</u> There are no current advisories https://www.dhs.gov/national-terrorism-advisory-system</p>	<p><u>Maritime Security (MARSEC)</u> Level:1 Minimum Appropriate Security Measures</p>	

(Significant changes from previous situation reports are red.)

Significant Issues:

SEOC is actively engaged with several communities regarding frozen utility's, water shortage, and fuel issues and continues to monitor these situations, coordinate with partners, and provide support as needed.

2025 October West Coast Storm Disaster:

156 households/ **571** individuals transitioned from non-congregate shelters (hotels) to longer-term housing (apartments)

In Non-Congregate Shelter (hotels) Individuals:**36** Households:**8**

Division of Homeland Security and Emergency Management Public Information:

For current press releases, see:

<https://ready.alaska.gov/PublicInformation/PressReleases>

Department of Health (DOH):

For current information, see: <https://health.alaska.gov/en/>

Travel Alerts and Conditions:

For current driving conditions, dial 511 or visit: <https://511.alaska.gov/>

Barry Arm Landslide / Tsunami Risk:

For the latest information on the Barry Arm Landslide and Tsunami risk, click here:

<https://dggs.alaska.gov/hazards/barry-arm-landslide.html>

Earthquakes:

United States Geological Service (USGS) Earthquake Information: [Earthquake Hazards Program | U.S. Geological Survey](#) - National Tsunami Warning Center: <https://tsunami.gov/>

Alaska Volcanoes:

Great Sitkin: Alert Level: Watch and Aviation Color Code: Orange
Shishaldin: Alert Level: Advisory and Aviation Color Code: Yellow
For Alaska Volcano updates, go to: <https://www.avo.alaska.edu/>

Air Quality Index (AQI) Advisories:

For the most up-to-date Air Quality Index Advisories:
<https://dec.alaska.gov/Applications/Air/airtoolsweb/Advisories>

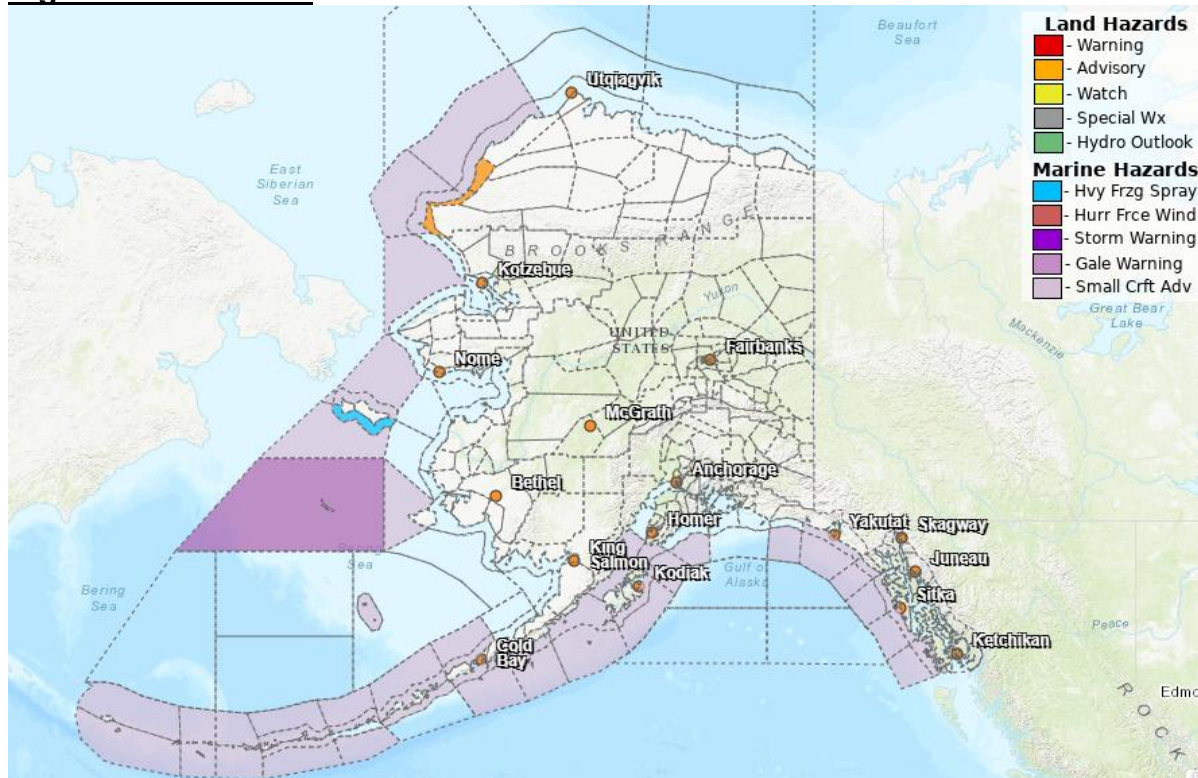
Spills of Oil and Hazardous Substances:

The Alaska Division of Environmental Conservation (ADEC) Spill Prevention and Response page is located at: <https://dec.alaska.gov/spar/ppr/spill-information/response/>

Alaska Cyber Security Information:

State Employees may sign up for cybersecurity notifications and alerts at:
<https://oit-int.alaska.gov/security/>

Significant Weather:



ADVISORIES:

Winter Weather Advisory in effect from 7 PM Tuesday to 4 PM AKDT Thursday for Western Arctic Coast.

For more information, go to <https://www.weather.gov/arh/>

Avalanche Conditions:



Hatcher Pass – Moderate above 2500', Low elsewhere

Chugach State Park – **Considerable all elevations.**

Turnagain Pass and Girdwood – Moderate at all elevations.

Summit Lake – Moderate at all elevations.

Seward and Lost Lake – Moderate at all elevations.

Valdez: Maritime, Intermountain, Continental – **Moderate at all elevations.**

Douglas Island – **Low at all elevations.**

For more information and the most current avalanche conditions, go to <https://alaskasnow.org>

The Next Situation Report will be on **April 15, 2026**. A significant change in situation or threat level will prompt an interim report. This report is posted on the internet at <https://ready.alaska.gov/sitrep>.

To register for email distribution, go to: <http://list.state.ak.us/mailman/listinfo/dhsem.situation.report>.
Direct questions regarding this report to the SEOC at 907-428-7100 or seoc@alaska.gov